

State of Wyoming Corner Record

(In compliance with the **CORNER PERPETUATION AND FILING ACT**, Wyoming Statutes, 1997 Section 33-29-140 et. seq., and the Rules and Regulations of the Board of Professional Engineers and Professional Land Surveyors)

Reverse side of this form may be used if more space is needed.

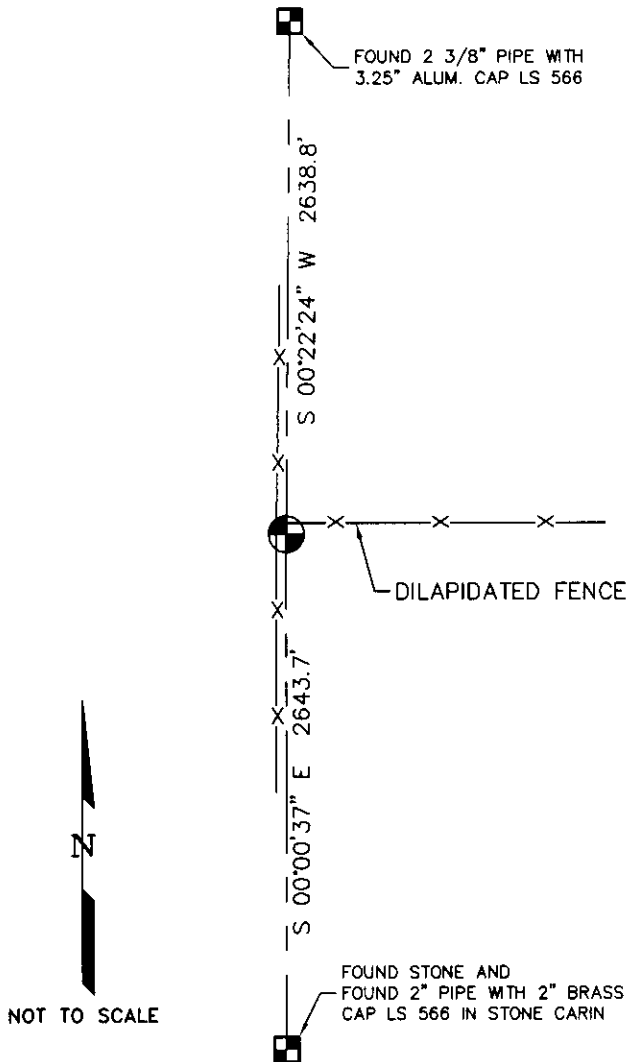
Record of original survey and citation of source of historical information (if corner is lost or obliterated). Description of corner monumentation evidence found and/or monument and accessories established to perpetuate the location of this corner. Sketch of relative location of monument, accessories, and reference points with course and distance to adjacent corner(s) (if determined in this survey). Method and rationale for reestablishment of lost or obliterated corner.

GLO RECORD: "SET GRANITE STONE 16 X 12 X 10 FOR 1/4 SEC COR."

MONUMENT FOUND: FOUND 8" X 12" GRANITE STONE WITH 1/4 CHISELED ON NORTH FACE.

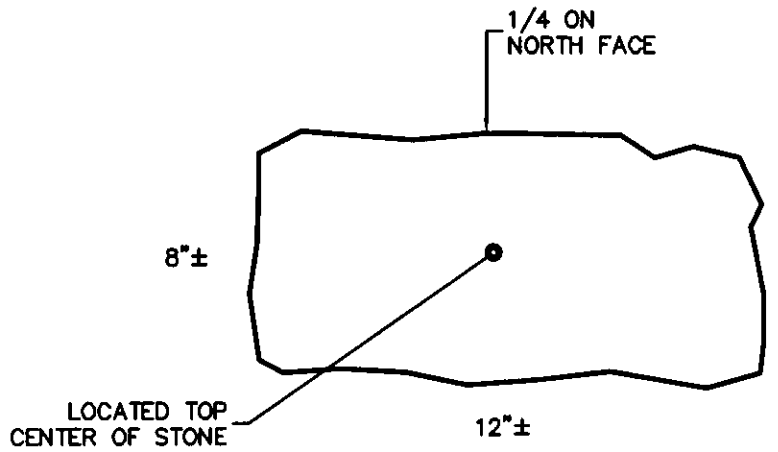
MONUMENT SET: NONE.

REFERENCES: FOUND AT INTERSECTION OF DILAPIDATED FENCE. SEE DIMENSIONS TO ADJACENT SECTION CORNER MONUMENTS AS SHOWN IN SKETCH BELOW.



*NOTE: THE BEARING LISTED HEREON IS A GRID BEARING OF THE WYOMING COORDINATE SYSTEM NAD 1983, EAST ZONE.


 RECORDED 7/13/2010 AT 8:20 AM REC# 548545 BK# 2173 PG# 423
 DEBRA K. LATHROP, CLERK OF LARAMIE COUNTY, WY PAGE 1 OF 1



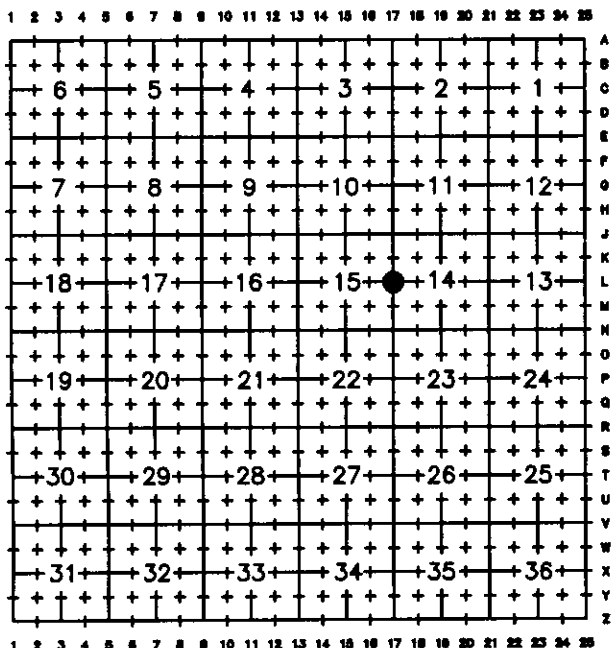
Found Monument Inscription

L 60-16

Date of Field Work: 5/25/10

Office Reference: 2010024 (LAT40)

Cross Index Plat



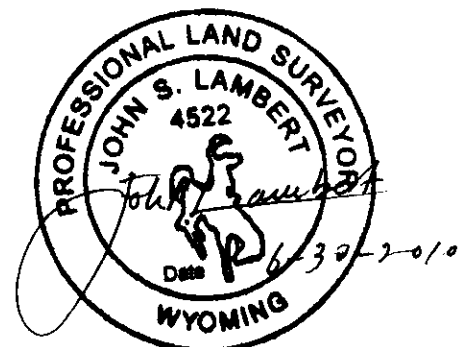
Firm/Agency, Address

Lambert Land Consulting, LLC
417 South Whitcomb Street
Fort Collins, Colorado 80521

This corner record was prepared by me or under my direction and supervision.

Telephone Number: 970-217-2190

SEAL & SIGNATURE



Corner Name EAST 1/4 Corner Section 15, T 13 N, R 68 W, 6th P.M.

Cross-Index No.: L-17